

Hospitals at a Glance

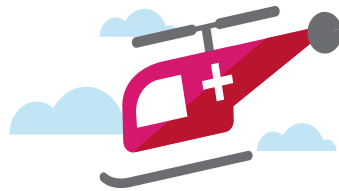


Colorado Hospital Association has over 100 member hospitals and health systems located in 48 counties around the state. These include general hospitals, pediatric, long-term acute care, behavioral health and rehabilitation facilities.



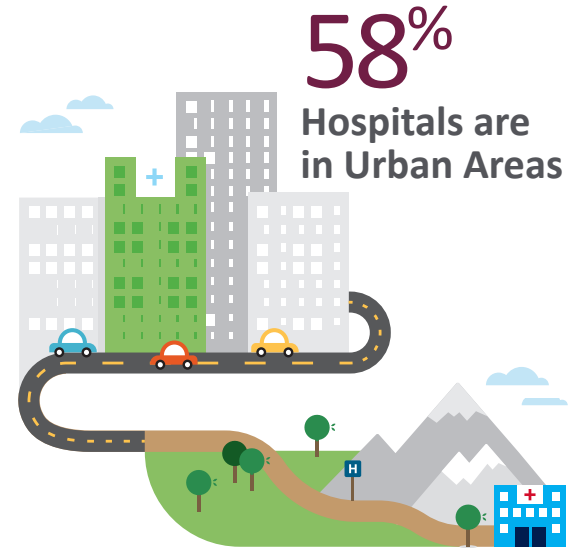
32 Critical Access Hospitals

Colorado has 32 critical access hospitals which provide essential medical services to rural and remote areas of the state.



75 Designated Trauma Centers

There are 75 designated trauma centers in Colorado hospitals that provide expert care to patients with life-threatening and complex medical conditions 24/7.



42% Hospitals are in Rural Areas

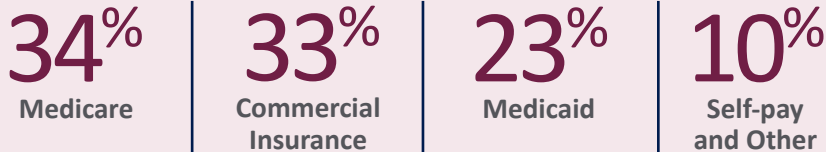
Rural hospitals are typically smaller and have fewer patients but must still provide the same quality and a broad range of services to meet the needs of their communities.

Patient Care in 2017*

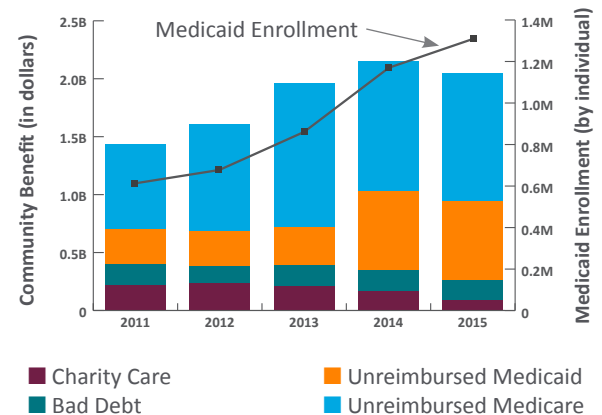


*Does not include all specialty hospitals

Who Pays for Hospital Care?



Hospitals Provide \$2 Billion in Community Benefits



75k Employees

Hospitals are a major employer in Colorado.

For more information, contact Joshua Ewing, CHA associate vice president of legislative affairs, at Joshua.Ewing@cha.com

