



How Your Care Team Gets Paid

Background: As hospitals focus more on “whole person care,” population health, and keeping people healthy and out of the hospital, typically only the very sickest patients receive care as an inpatient at a hospital.

Patients who receive care at an outpatient setting or physician’s office are typically charged as follows:

- **Professional fee, for the doctor and/or PA**
- **Facility fee which pays for everyone and everything else**



Professional Fees Pay For:



PA



Specialty Physician



Primary Physician

Facility Fees Pay For:



Registration Aid



Lab Tech



Patient Care Tech



BioMed Support



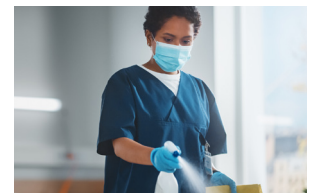
Medical Records/
IT and EHR Support



Charge Nurse/
Specialty Nurse



Nurse



Environmental
Services Staff



Food Services



Security

For questions, contact Joshua Ewing, CHA vice president, government affairs, at Joshua.Ewing@cha.com or 720.635.3493.